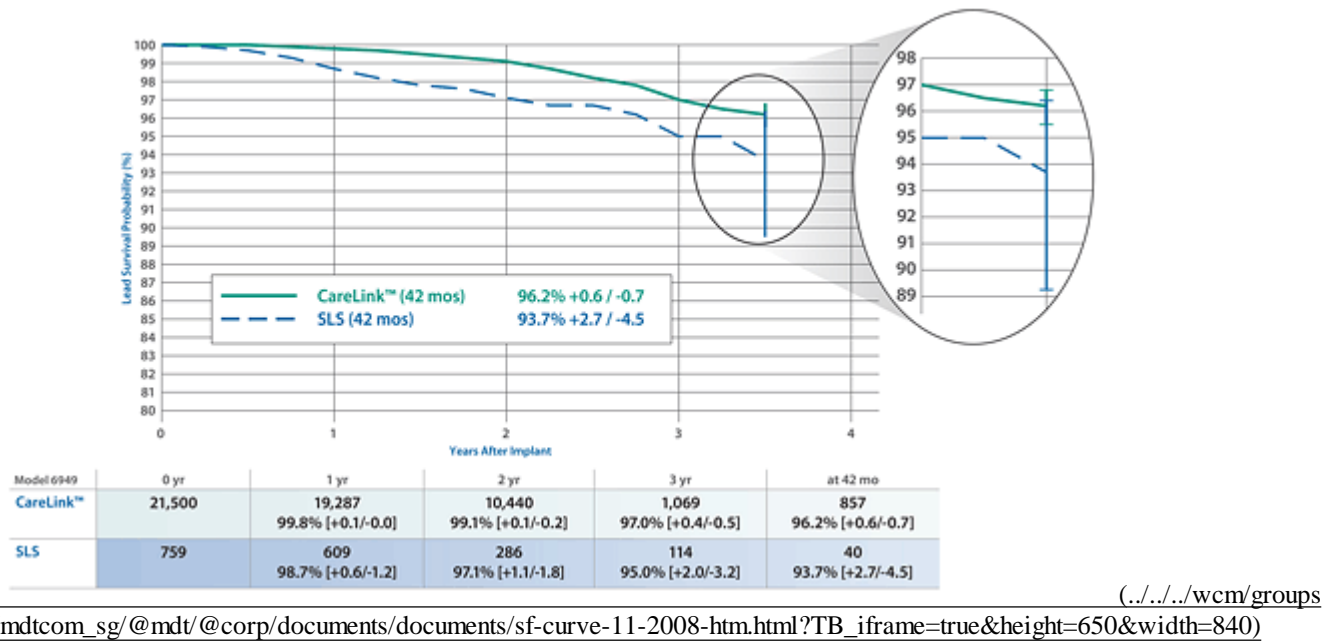




Sprint Fidelis® Model 6949 Lead Performance



Click to view larger image (../../wcm/groups/mdtcom_sg/@mdt/@corp/documents/documents/sf-curve-11-2008-htm.html?TB_iframe=true&height=650&width=840)

Shown here are the survival curves for the Sprint Fidelis lead model 6949 using CareLink and SLS data. The data shows 42 month survival of 96.2% [+0.6/-0.7] for CareLink data and 93.7% [+2.7/-4.5] for SLS data.

The estimated survival probability at the leading edge of the SLS survival curve may change over time due to the limited accuracy associated with small sample sizes. Smaller study populations can artificially skew results, as small data movements in smaller samples can bring about disproportionately large percentage changes. For example, a single event in a population with an effective sample size of approximately 50 leads can change the estimated survival probability by 2%. As the implanted population ages and the sample size increases for each time interval, the accuracy of the estimated survival probability will increase as shown by tighter confidence intervals.

Last updated: 3 Nov 2008

© 2008 Medtronic, Inc.